



# INDEX

**Criteria No: 7**

**Metric No: 7.1.1.2**

**Geotagged Photographs: Security**

Sr.no.	Content	Page No.
1	Camera	2-3
2	Lawn	4-5
3	Fire Extinguisher	6-7
4	Fire Safety	8
5	Security Cabin and watchman	9
6	Common Room	10



*P. Hengale*  
**Principal**  
College of Pharmacy, Chincholi  
Tal. Sinnar, Dist. Nashik 422102

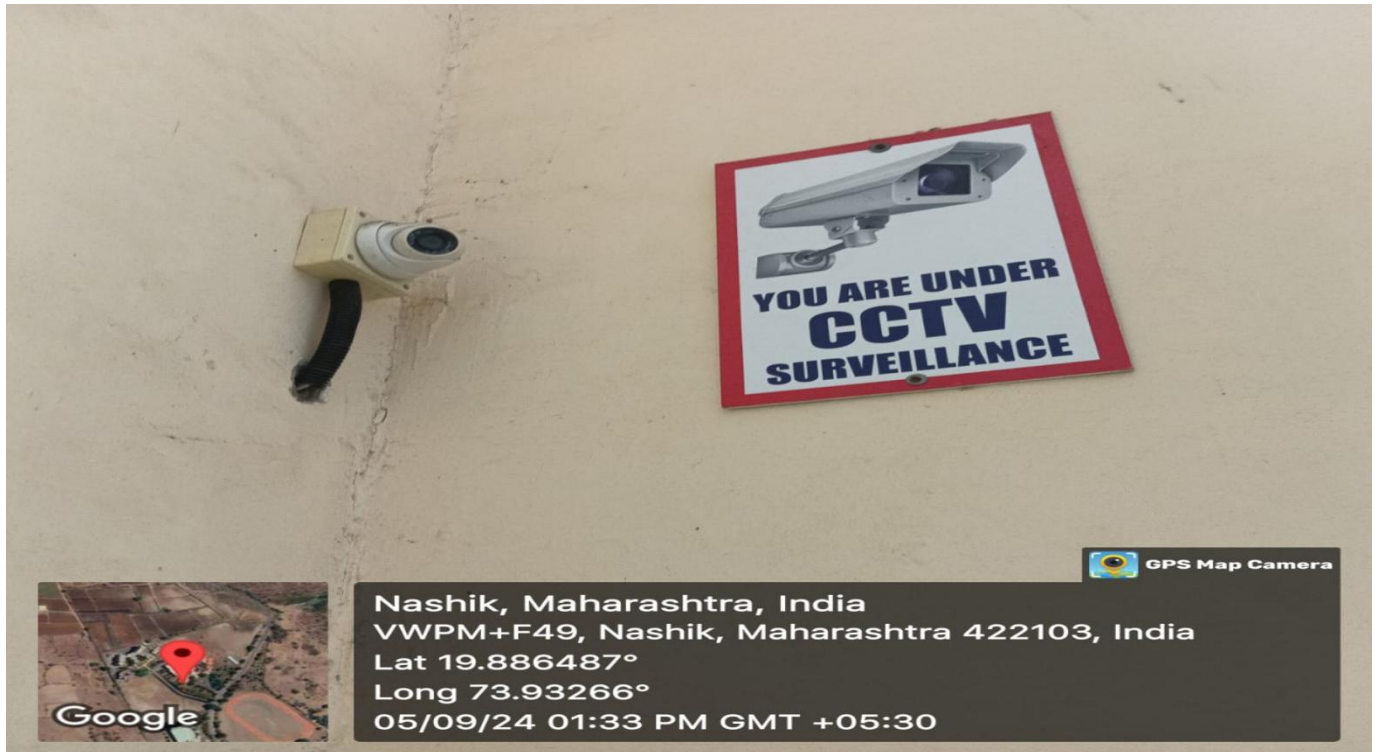
NAAC ACCREDITED 'A' Grade

Approved by AICTE, Pharmacy Council of India, New Delhi and recognized by Govt. of Maharashtra  
AISHE Code No. C-44115

Address : At./Po. Chincholi, Tal. Sinnar, Dist. Nashik (M.S.) Pin : 422 102  
Ph No.: +91-2551-271178 | Website : www.pravara.in | Email - principal.bpharmwomennashik@pravara.in

**CAMERA PHOTO:**



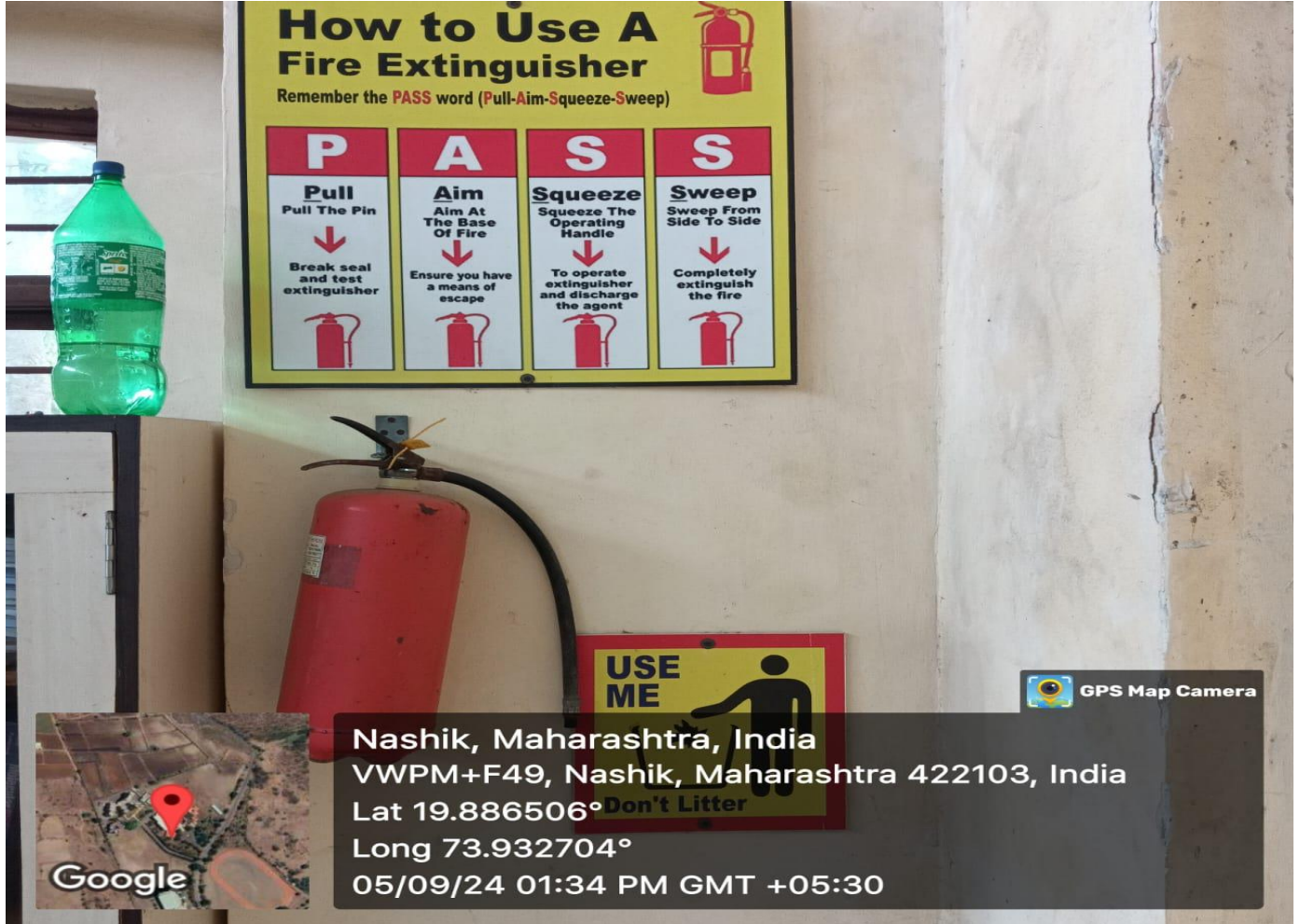


# Lawn





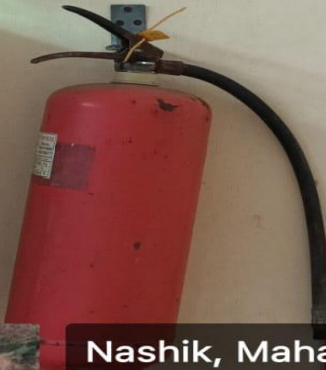
# FIRE EXTINGUISHER PHOTO



## How to Use A Fire Extinguisher

Remember the **PASS** word (Pull-Aim-Squeeze-Sweep)

P	A	S	S
<b>Pull</b> Pull The Pin	<b>Aim</b> Aim At The Base Of Fire	<b>Squeeze</b> Squeeze The Operating Handle	<b>Sweep</b> Sweep From Side To Side
↓	↓	↓	↓
Break seal and test extinguisher	Ensure you have a means of escape	To operate extinguisher and discharge the agent	Completely extinguish the fire
			



GPS Map Camera



Nashik, Maharashtra, India  
VWPM+F49, Nashik, Maharashtra 422103, India  
Lat 19.886506°  
Long 73.932704°  
05/09/24 01:34 PM GMT +05:30



# FIRE SAFTY PHOTO

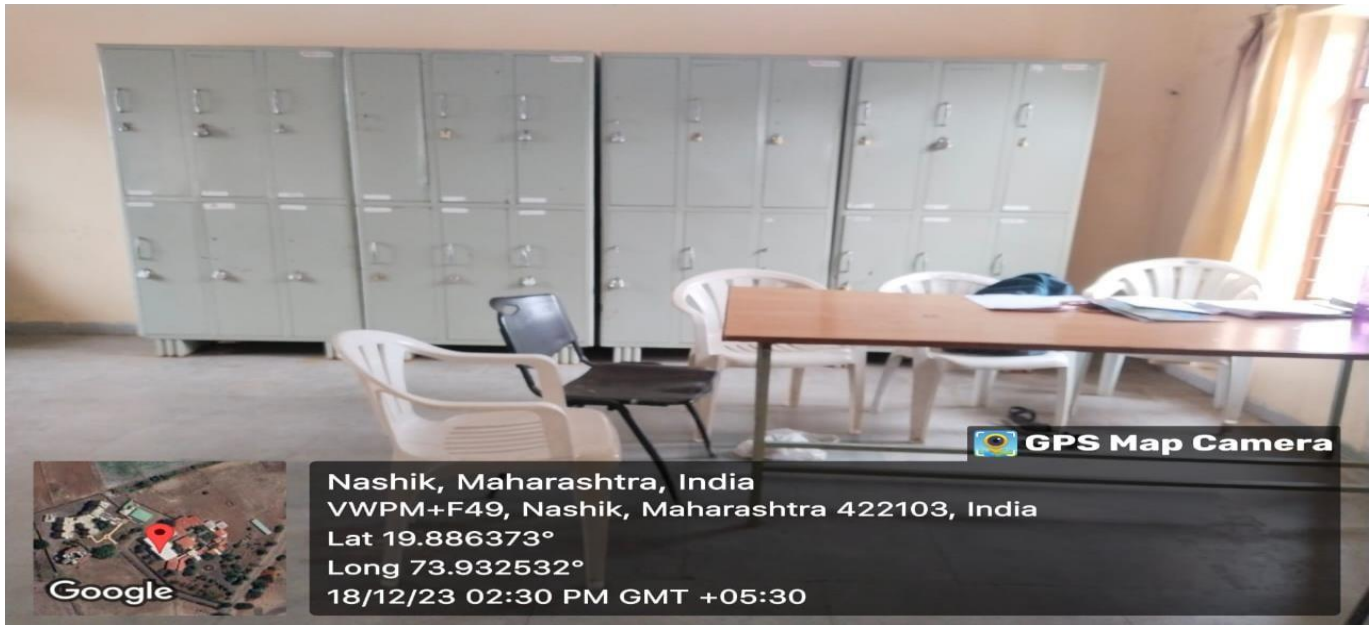




# SECURITY CABIN AND WATCHMAN PHOTO



## COMMON ROOM PHOTO



*P. Phangale*  
**Principal**  
College of Pharmacy, Chincholi  
Tal. Sinnar, Dist. Nashik 422102