



Pravara Rural Education Society's

COLLEGE OF PHARMACY (FOR WOMEN)



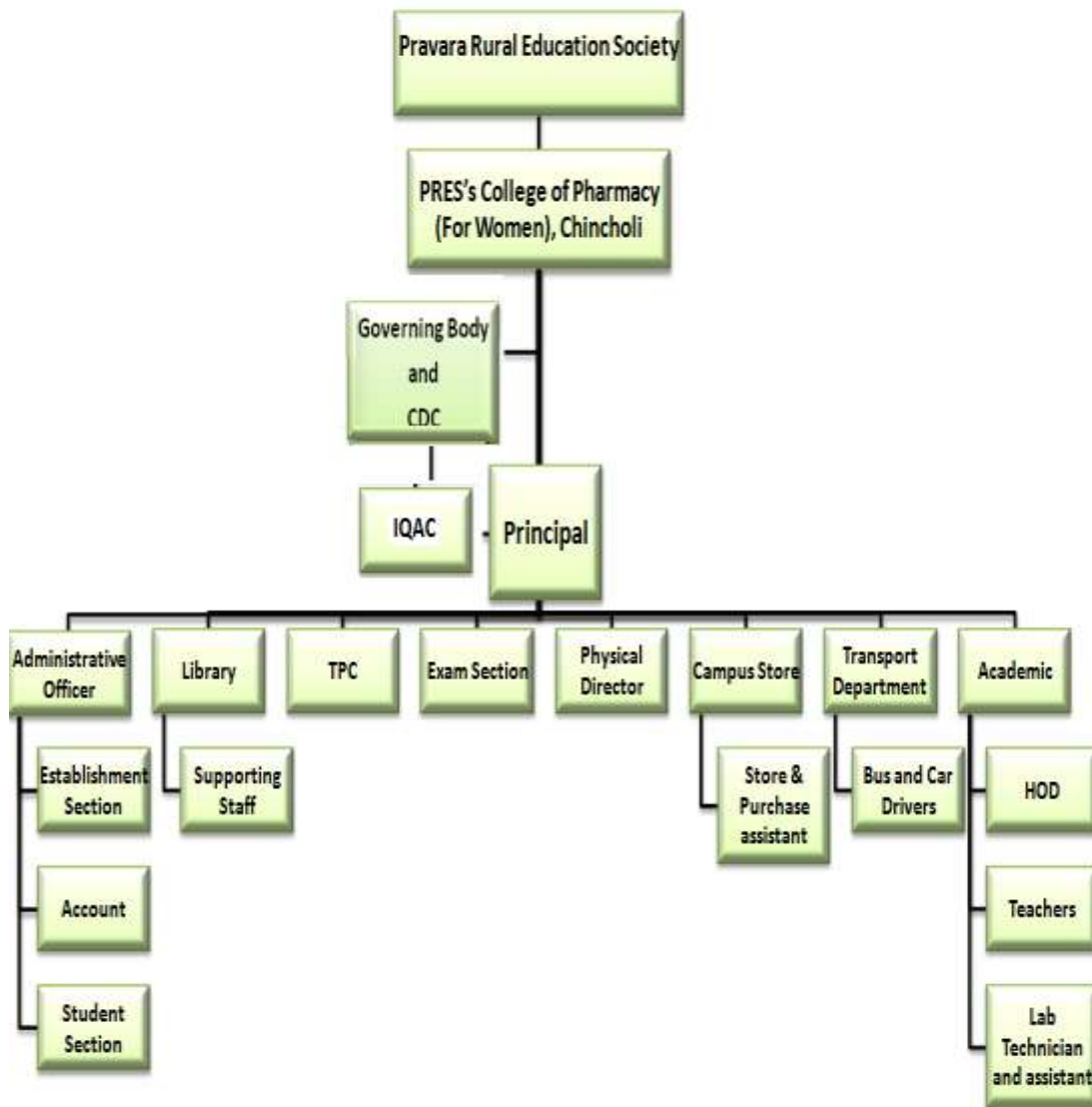
Chincholi, Tal. Sinnar, Dist. Nashik 422103, Maharashtra, India
Ph.No. (02551)271178, Fax No. : (02551)271178

Website: www.pravarapharmacy.in

Email ID: pravaracopc@yahoo.co.in

Approved by A.I.C.T.E., Pharmacy Council of India, New Delhi and recognized by Govt. of Maharashtra
Affiliated to SavitribaiPhule Pune University, Pune.

ORGANOGRAM



Phangale
Principal
College of Pharmacy, Chincholi
Tal. Sinnar, Dist. Nashik 422103