



INDEX

Criteria No: 1

Metric No: 1.4.2

File Name: Feedback Analysis and Action Taken Reports

Sr. No.	Content	Page No.
1.	Summary of Feedback	2
2.	Student Feedback Analysis: Curriculum	3
3.	Student Feedback Analysis Infrastructure and Facilities	4
4.	Student Feedback: Teaching and Learning (Transaction of Syllabus)	5-19
5.	Teacher Feedback: Curriculum	20
5.	Alumni Feedback: Curriculum	21
6.	Employer Feedback: Curriculum	22
7.	Parent Feedback: Teaching and Facilities	23
8.	Action Taken Report: Teaching and Learning	24-26
9.	Action Taken Report: Curriculum Feedback	27
10.	Action Taken Report: Facility related Feedback	28-29

SUMMARY OF FEEDBACK ANALYSIS AND ACTION TAKEN REPORT

PART I: SUMMARY OF FEEDBACKS

Sr. No	Stakeholder	No.of Feedbacks collected
1	Student Feedback: Curriculum	100
2	Student Feedback: Infrastructure and Facilities	100
3	Student Feedback Analysis: Teaching and Learning (Transaction of Syllabus)	260
4	Teacher feedback: Curriculum	15
5	Alumni feedback: Curriculum	37
6	Employer feedback: Curriculum	10
7	Parent Feedback: Teaching and Facilities	40

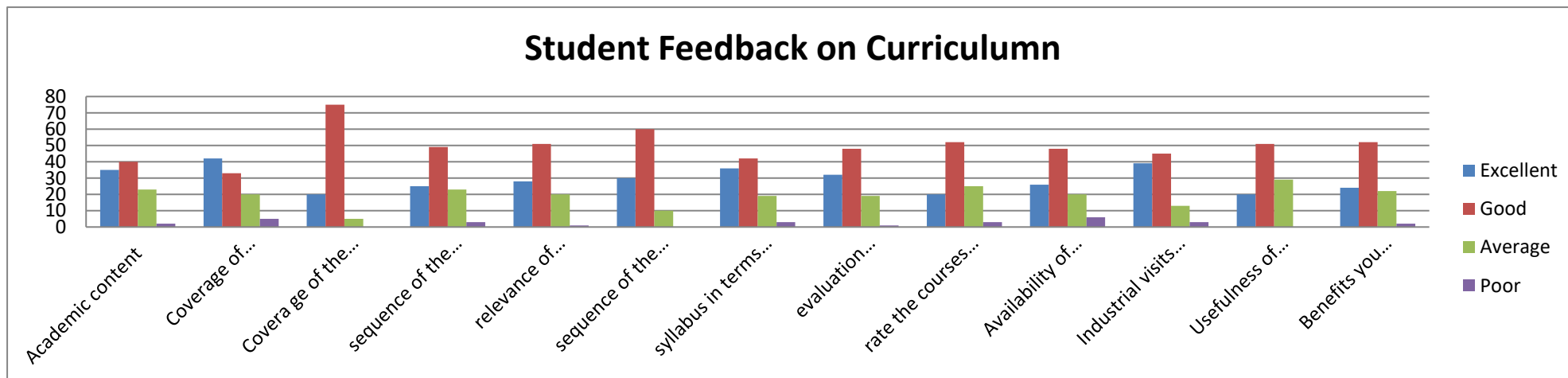
PART II: FEEDBACK ANALYSIS

Feedback are collected as follows:

Sr. No	Stakeholder	Nature of feedback	Reason for feedback
1	Students	Curriculum	To provide suggestions for upgrading the syllabus
		Infrastructure and facilities	To evaluate the facilities available and to upgrade them as per students requirement
		Teaching learning	To check effective implementation and transaction of Curriculum
2	Teachers	Curriculum	To provide suggestions for technical up gradation of Syllabus
3	Alumni	Curriculum as well as facilities available	To provide suggestions for technical up gradation of syllabus and to review existing facilities
4	Employers	Curriculum and skill	To provide suggestions for technical up gradation of syllabus and to review skills imparted during course in the alumnus
5	Parents	Quality of teaching, facilities and skills	To evaluate ourselves for the delivery of education as well as facilities

Students Feedback Curriculum: (Number of responses: -100)

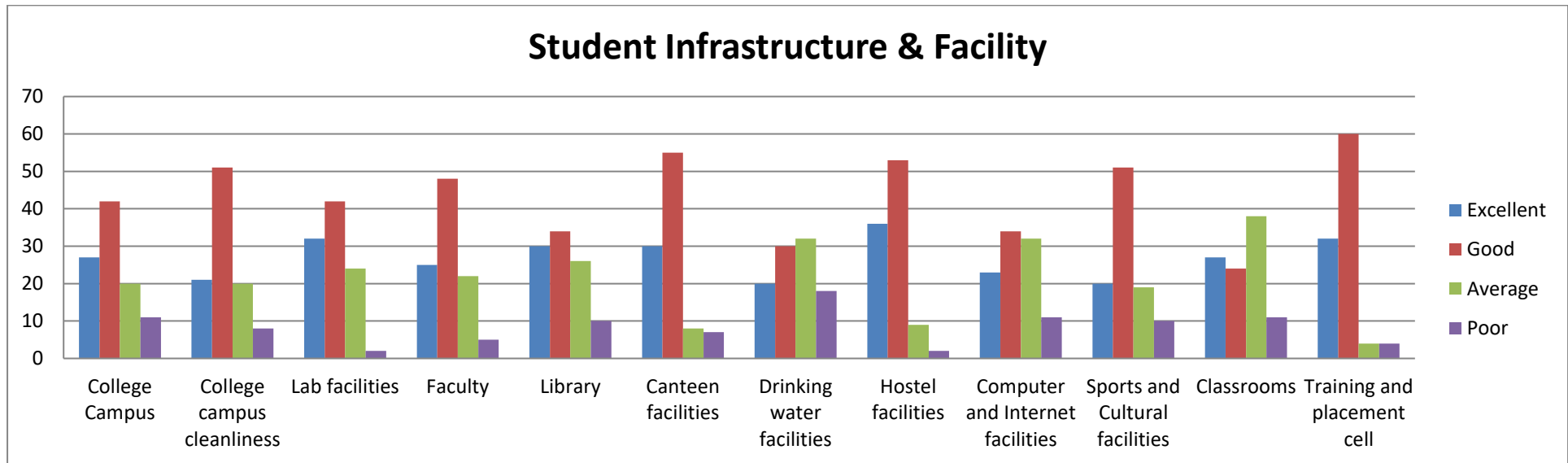
Grade	Acad emic conte nt	Covera ge of moder n/adv anced topic	Cover age of the syllab us in classr oom	Sequenc e of the subjects	Relevance of units in the syllabus relevant to courses	Sequenc e of the units in the course	Syllabus in terms of the load on the students	Evalua tion scheme designe d for each of the course	Rate the courses that you have learnt in relation to your real life applicati on	Availabili ty of text books/stu dy materials	Industrial visits conducted	Useful ness of tests and assign ments	Benefits you derived from the course
Excellent	35	42	20	25	28	30	36	32	20	26	39	20	24
Good	40	33	75	49	51	60	42	48	52	48	45	51	52
Average	23	20	5	23	20	10	19	19	25	20	13	29	22
Poor	2	5	0	3	1	0	3	1	3	6	3	0	2

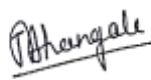



 Principal
 College of Pharmacy, Chincholi
 Tal. Sirmar, Dist. Nashik 422102

Students Feedback on Infrastructure and Facilities: (Number of responses:-100)

Grade	College Campus	College Campus cleanliness	Lab Facilities	Faculty	Library	Canteen facilities	Drinking water facilities	Hostel facilities	Computer and Internet facilities	Sports and cultural facilities	Classrooms	Training and Placement cell
Excellent	27	21	32	25	30	30	20	36	23	20	27	32
Good	42	51	42	48	34	55	30	53	34	51	24	60
Average	20	20	24	22	26	8	32	9	32	19	38	4
Poor	11	8	2	5	10	7	18	2	11	10	11	4

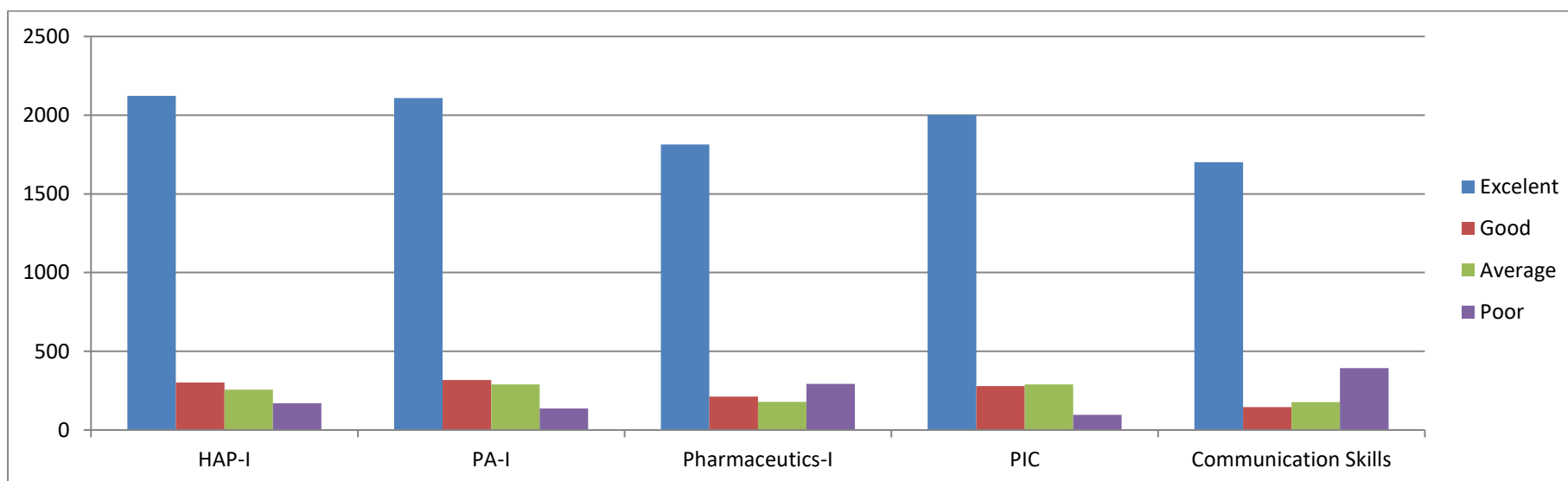



Principal
 College of Pharmacy, Chincholi
 Tal. Sinnar, Dist. Nashik 422102

Students Feedback on Teaching and Learning: (Number of responses:-260)

Teaching Learning: I sem (No. of Responses-62)

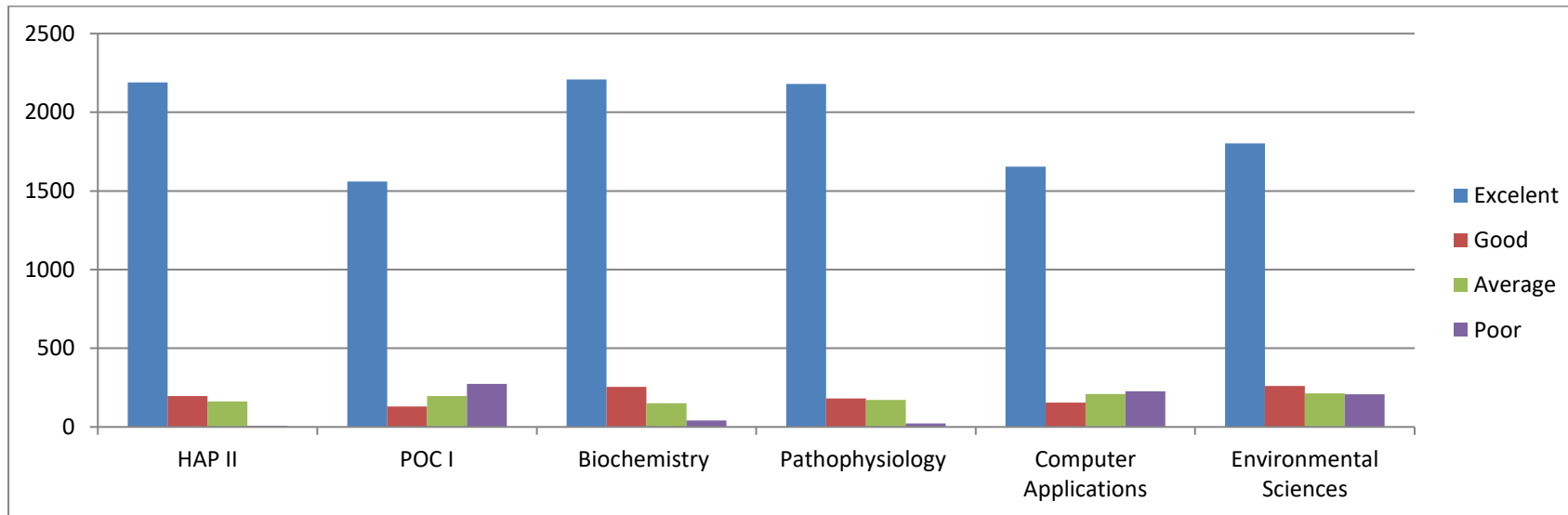
	HAP-I	PA-I	Pharmaceutics-I	PIC	Communication Skills
Excelent	2123	2109	1813	2001	1701
Good	302	317	213	279	145
Average	257	289	179	290	178
Poor	171	136	293	96	394



Phangale
Principal
College of Pharmacy, Chincholi
Tal. Sinar, Dist. Nashik 422102

Teaching Learning: II sem (No. of Responses-54)

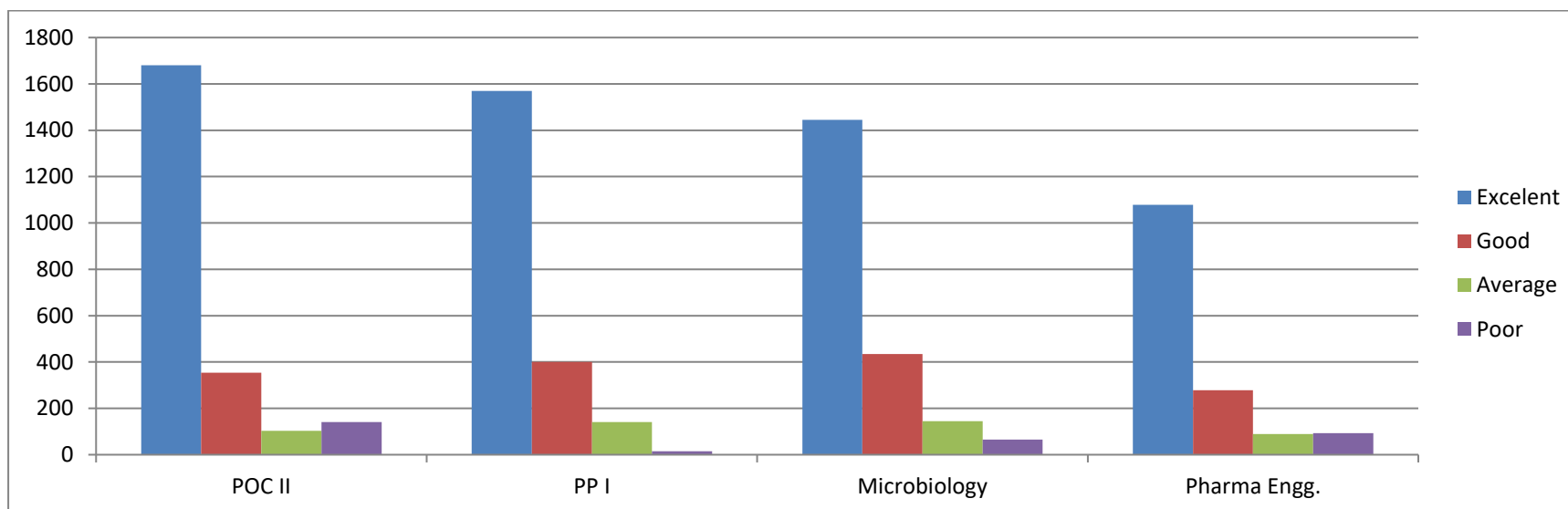
	HAP II	POC I	Biochemistry	Pathophysiology	Computer Applications	Environmental Sciences
Excelent	2190	1560	2209	2180	1654	1802
Good	197	130	254	181	154	260
Average	163	197	150	171	209	213
Poor	8	274	41	22	226	208



P. Mangale
Principal
 College of Pharmacy, Chincholi
 Tal. Sinar, Dist. Nashik 422102

Teaching Learning: III sem (No. of Responses-48)

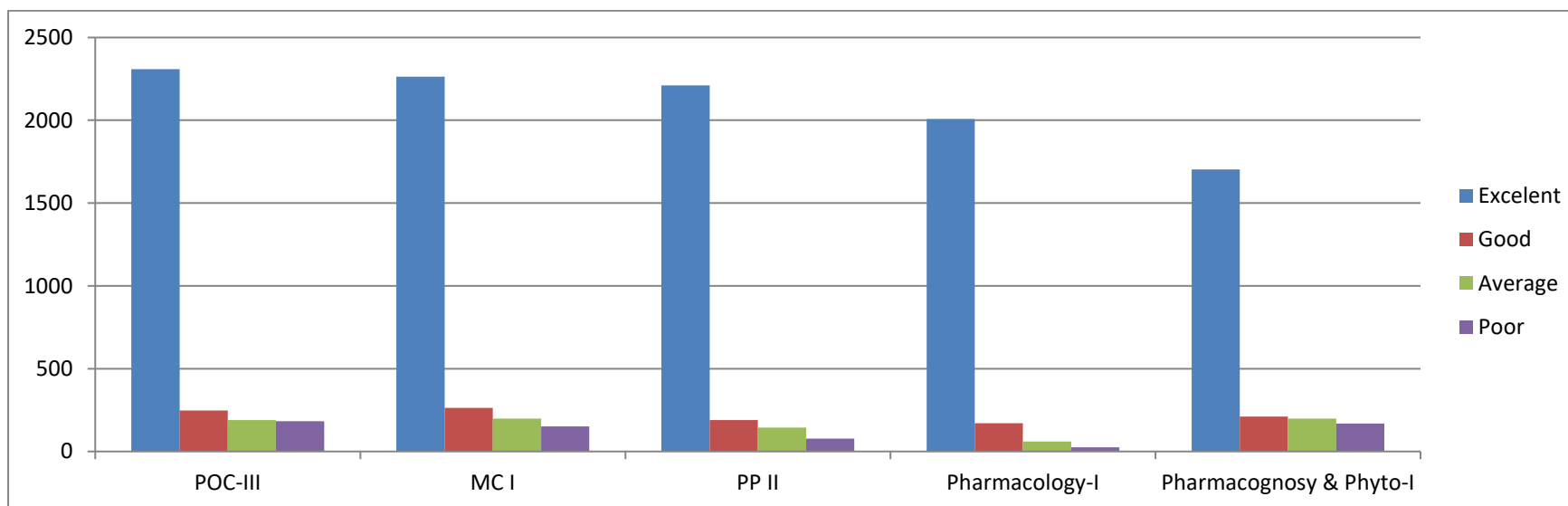
	POC II	PP I	Microbiology	Pharma Engg.
Excelent	1680	1569	1445	1078
Good	354	401	434	278
Average	103	141	145	89
Poor	141	15	65	93



Phangale
Principal
 College of Pharmacy, Chincholi
 Tal. Sinnar, Dist. Nashik 422102

Teaching Learning: IV sem (No. of Responses-62)

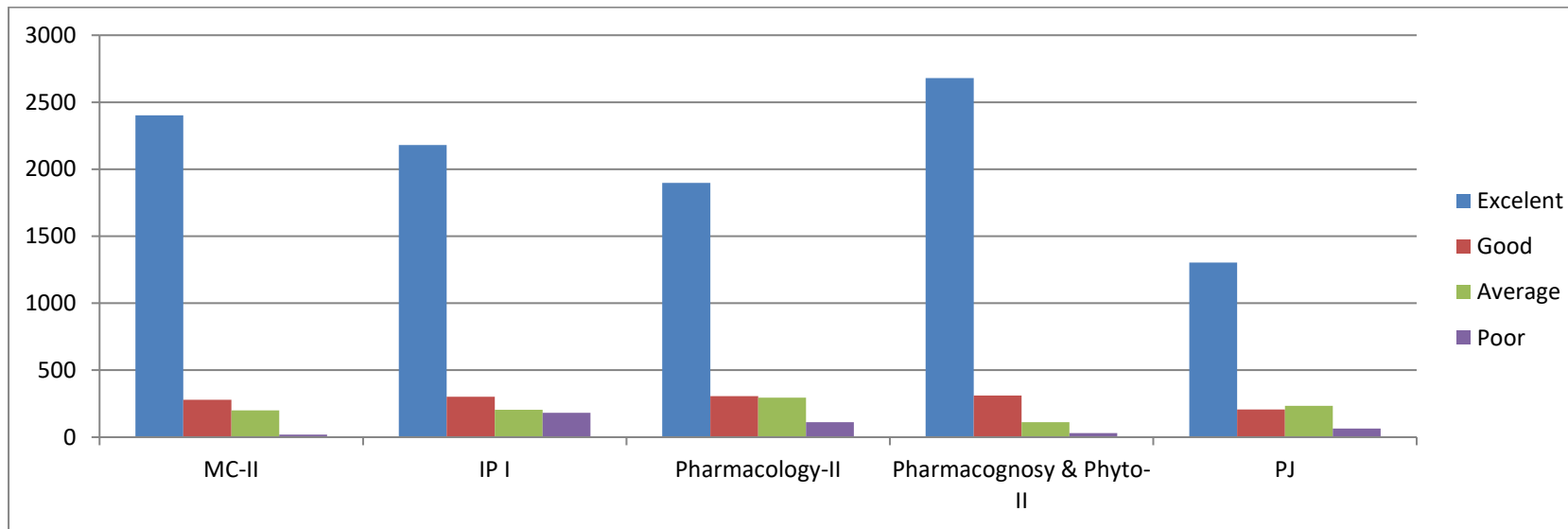
	POC-III	MC I	PP II	Pharmacology-I	Pharmacognosy & Phyto-I
Excelent	2309	2263	2211	2007	1703
Good	248	264	189	171	211
Average	189	199	144	60	199
Poor	183	152	78	25	168



P. Hangale
Principal
College of Pharmacy, Chincholi
Tal. Sinner, Dist. Nashik 422102

Teaching Learning: V sem (No. of Responses-64)

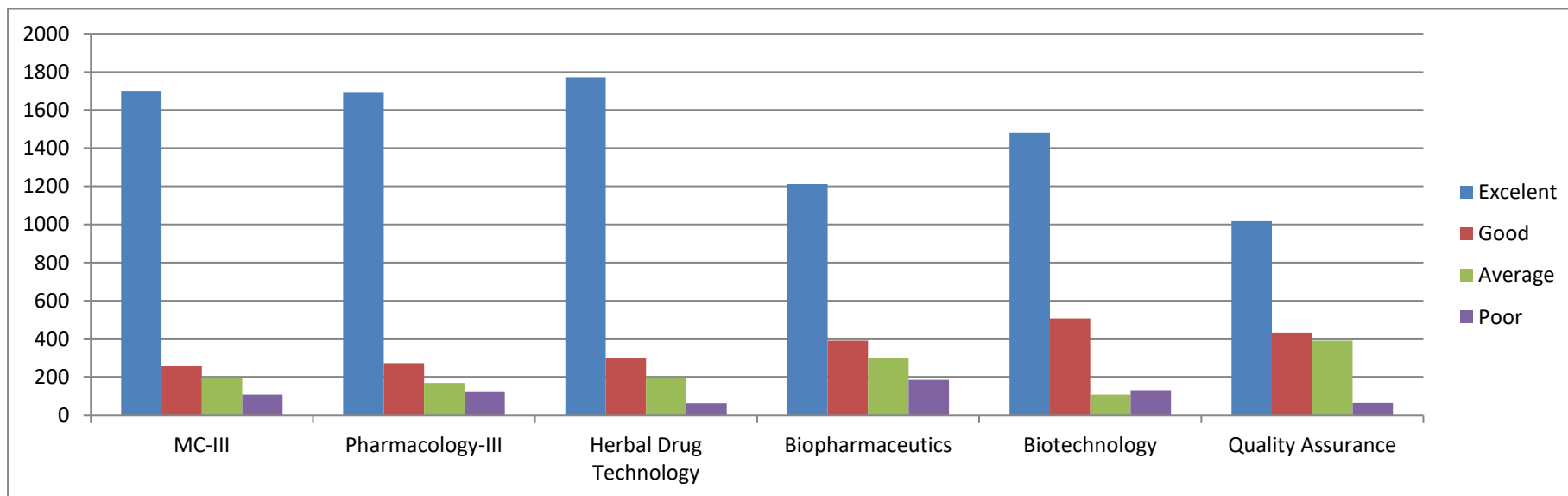
	MC-II	IP I	Pharmacology-II	Pharmacognosy & Phyto-II	PJ
Excelent	2401	2180	1899	2679	1303
Good	279	301	307	311	208
Average	201	205	296	112	233
Poor	20	181	113	30	64



P. Hangale
Principal
College of Pharmacy, Chincholi
Tal. Sinner, Dist. Nashik 422102

Teaching Learning: VI sem (No. of Responses-51)

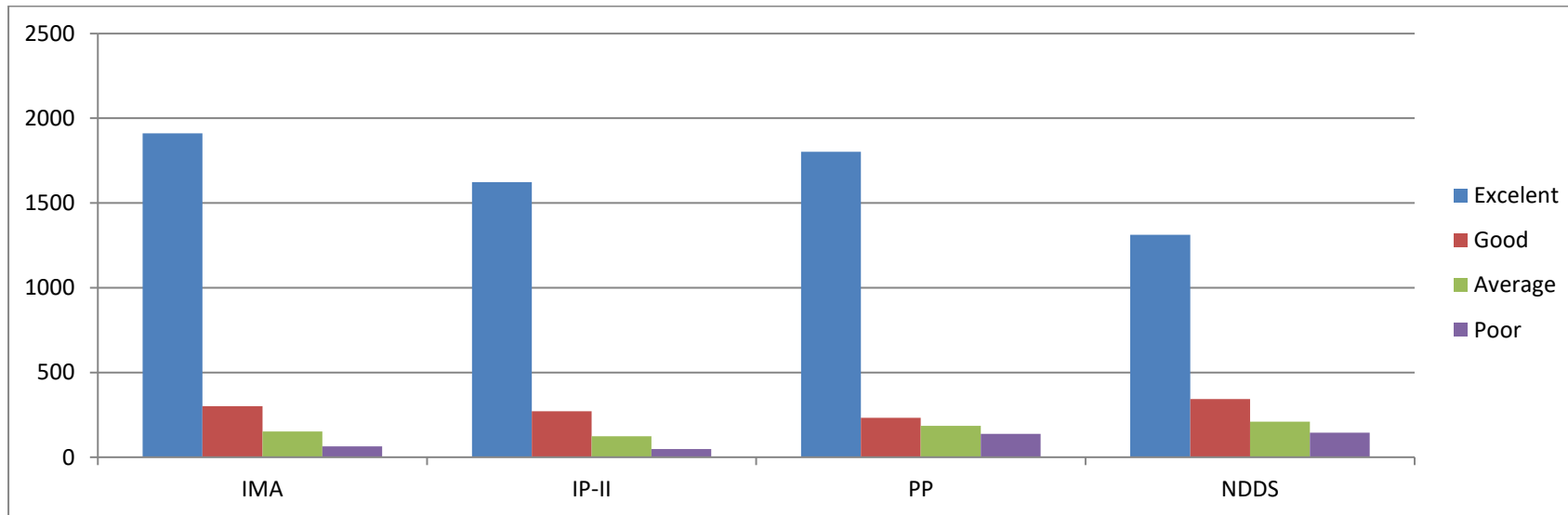
	MC-III	Pharmacology-III	Herbal Drug Technology	Biopharmaceutics	Biotechnology	Quality Assurance
Excelent	1701	1691	1772	1211	1480	1017
Good	257	271	301	389	507	433
Average	198	169	198	301	107	389
Poor	108	121	64	184	130	66



Phangale
Principal
 College of Pharmacy, Chincholi
 Tal. Sinnar, Dist. Nashik 422102

Teaching Learning: VII sem (No. of Responses-52)

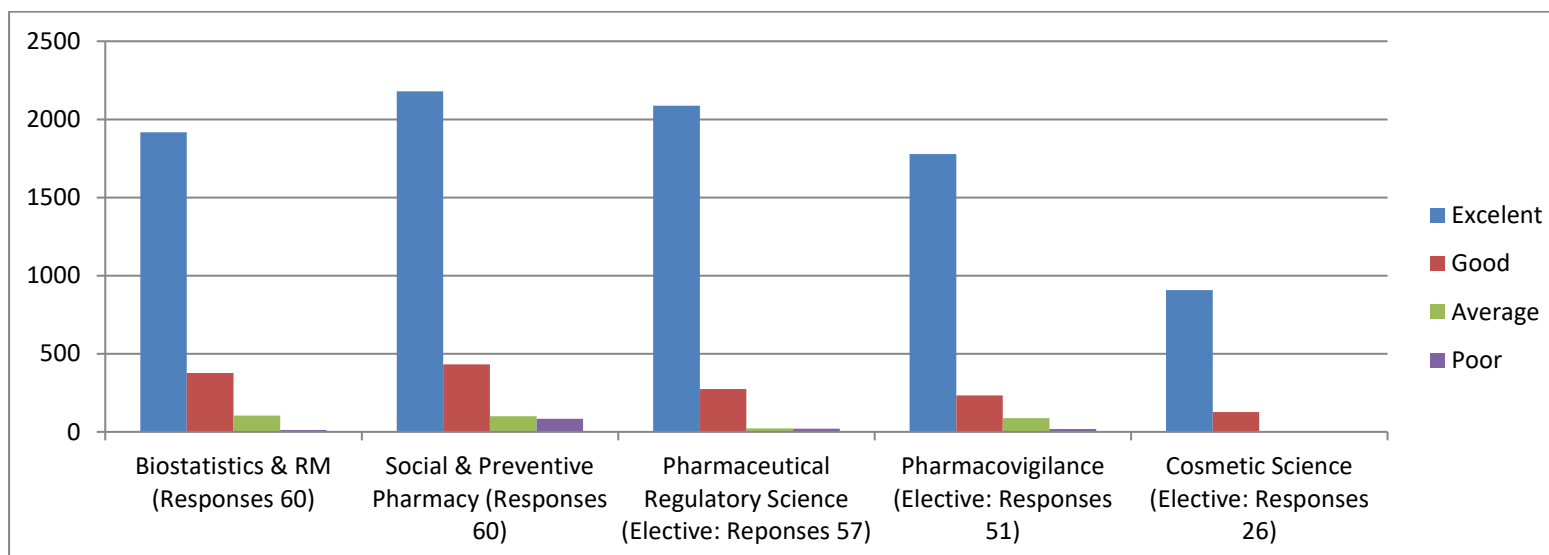
	IMA	IP-II	PP	NDDS
Excelent	1911	1623	1802	1312
Good	301	271	233	344
Average	151	124	185	210
Poor	64	49	138	144



Phangale
Principal
College of Pharmacy, Chincholi
Tel. Sinar, Dist. Nashik 422102

Teaching Learning: VIIIth sem

	Biostatistics & RM (Responses 60)	Social & Preventive Pharmacy (Responses 60)	Pharmaceutical Regulatory Science (Elective: Responses 57)	Pharmacovigilance (Elective: Responses 51)	Cosmetic Science (Elective: Responses 26)
Excelent	1918	2179	2088	1779	908
Good	377	433	274	233	126
Average	104	101	23	88	0
Poor	12	83	21	19	0

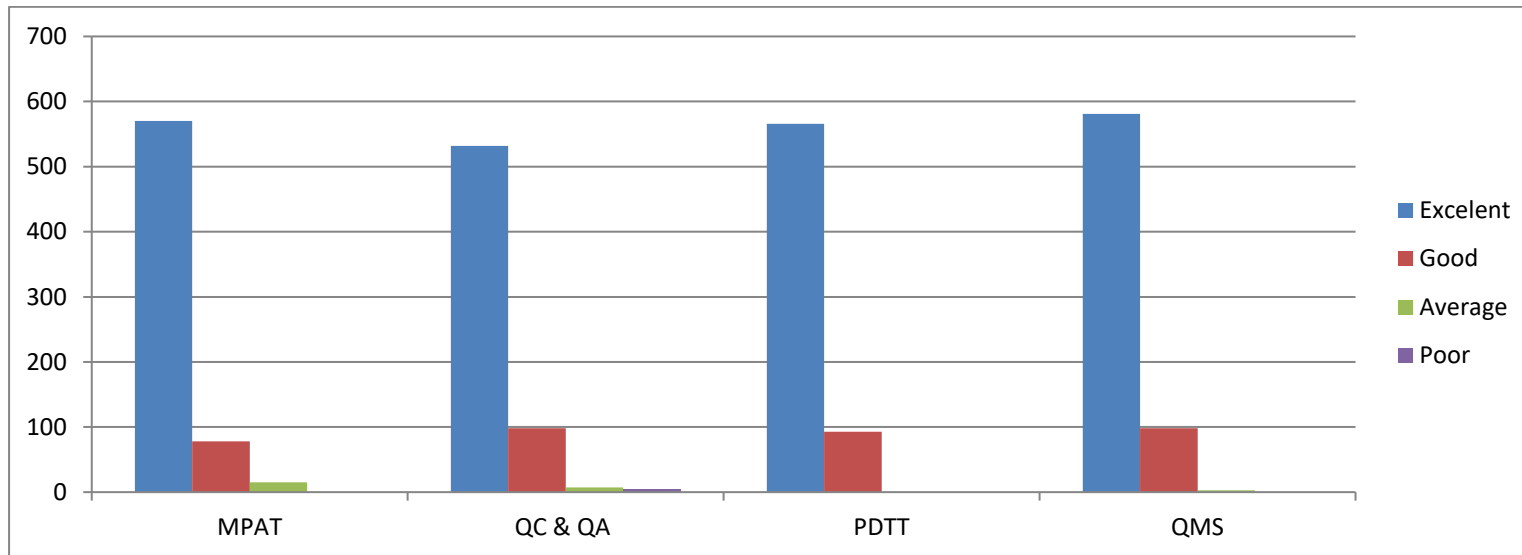


P. Bhargale
Principal
College of Pharmacy, Chincholi
Tal. Simar, Dist. Nashik 422102

Teaching Learning: M. Pharm I sem (Responses 14)

Course: Quality Assurance Techniques

	MPAT	QC & QA	PDTT	QMS
Excelent	570	532	566	581
Good	78	98	93	98
Average	15	7	0	3
Poor	0	5	0	0



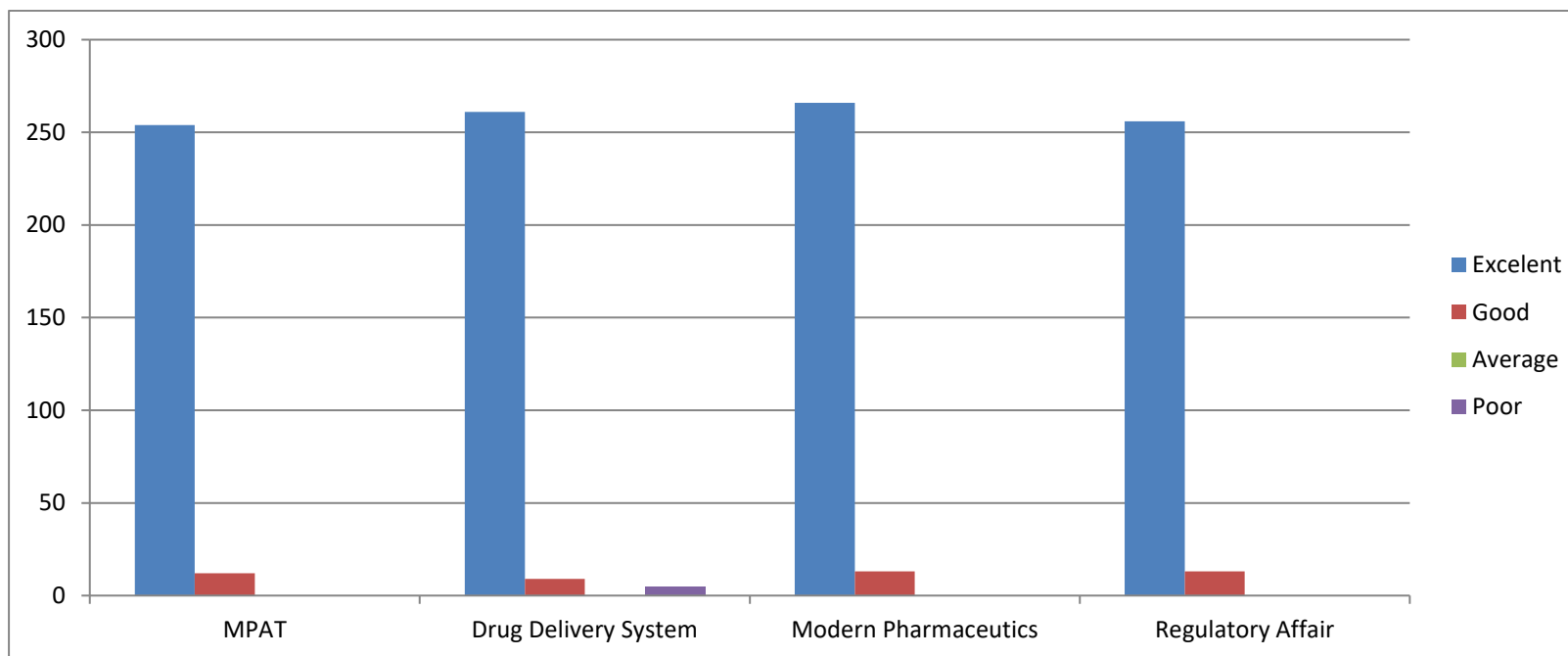
Phangale

Principal
College of Pharmacy, Chincholi
Tal. Sinnar, Dist. Nashik 422102

Teaching Learning: M. Pharm I sem (Responses 6)

Course:Pharmaceutics

	MPAT	Drug Delivery System	Modern Pharmaceutics	Regulatory Affair
Excelent	254	261	266	256
Good	12	9	13	13
Average	0	0	0	0
Poor	0	5	0	0

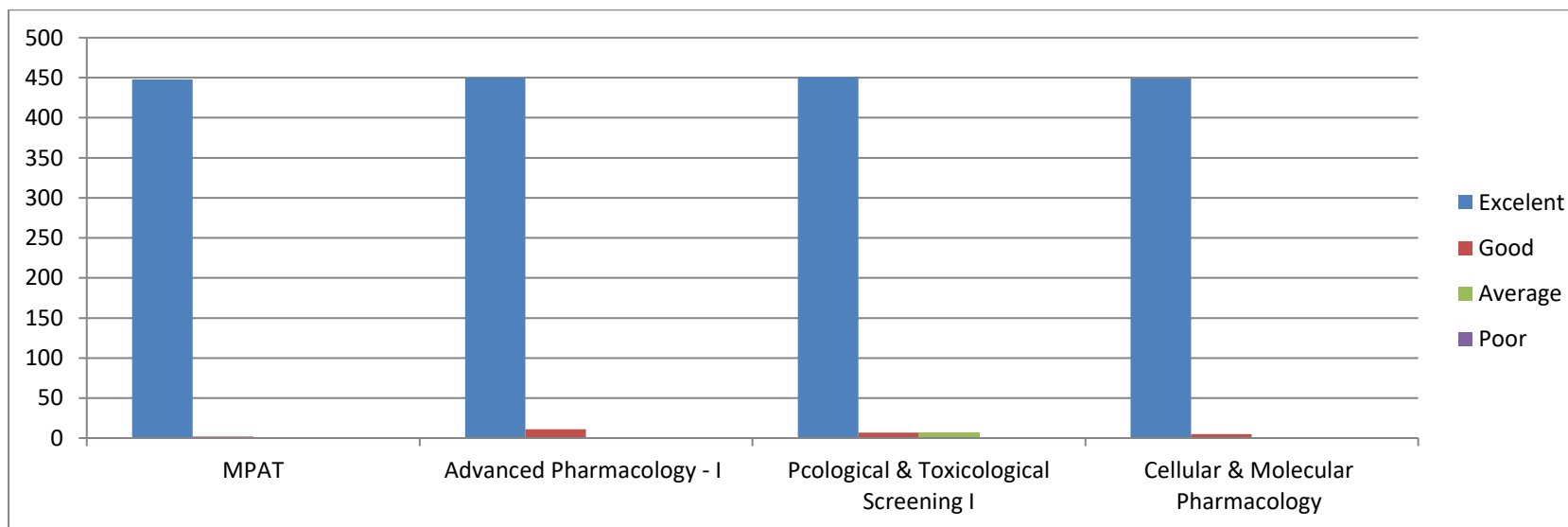


Phangale
Principal
College of Pharmacy, Chincholi
Tal. Sinar, Dist. Nashik 422102

Teaching Learning: M. Pharm I sem (Responses 10)

Course:
Pharmacology

	MPAT	Advanced Pharmacology - I	Pcological & Toxicological Screening I	Cellular & Molecular Pharmacology
Excelent	448	450	451	449
Good	2	11	7	5
Average	0	0	6	0
Poor	0	0	0	0

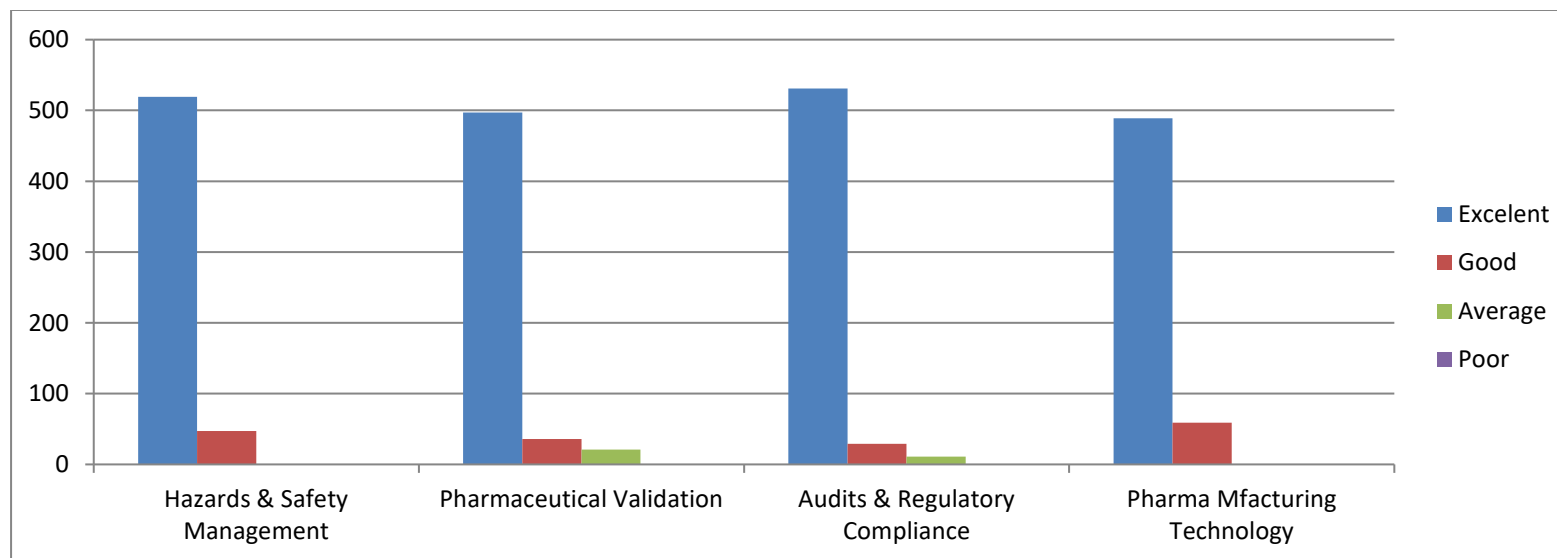


Phangale
Principal
College of Pharmacy, Chincholi
Tel. Sinar, Dist. Nashik 422102

Teaching Learning: M. Pharm II sem (Responses 12)

Course: Quality Assurance Techniques

	Hazards & Safety Management	Pharmaceutical Validation	Audits & Regulatory Compliance	Pharma Mfacturing Technology
Excelent	519	497	531	489
Good	47	36	29	59
Average	0	21	11	0
Poor	0	0	0	0

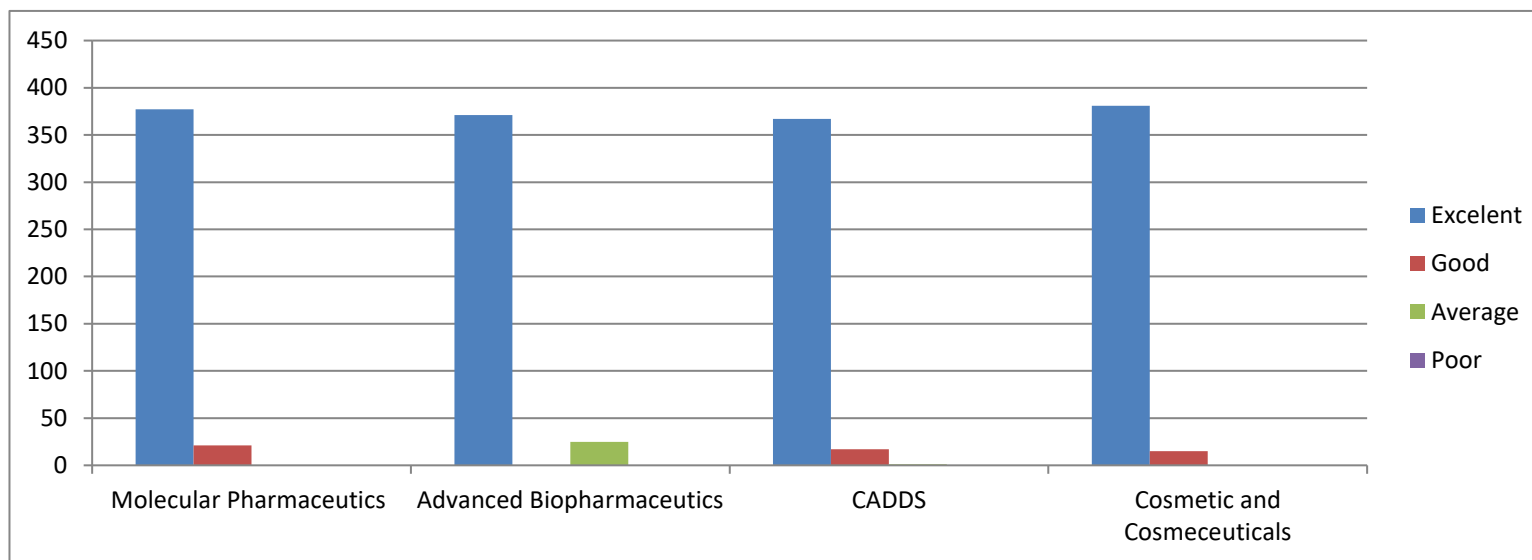


P. Mangale
Principal
 College of Pharmacy, Chincholi
 Tal. Simar, Dist. Nashik 422102

Teaching Learning: M. Pharm II sem (Responses 8)

Course: Pharmaceutics

	Molecular Pharmaceutics	Advanced Biopharmaceutics	CADDS	Cosmetic and Cosmeceuticals
Excelent	377	371	367	381
Good	21	0	17	15
Average	0	25	1	0
Poor	0	0	0	0

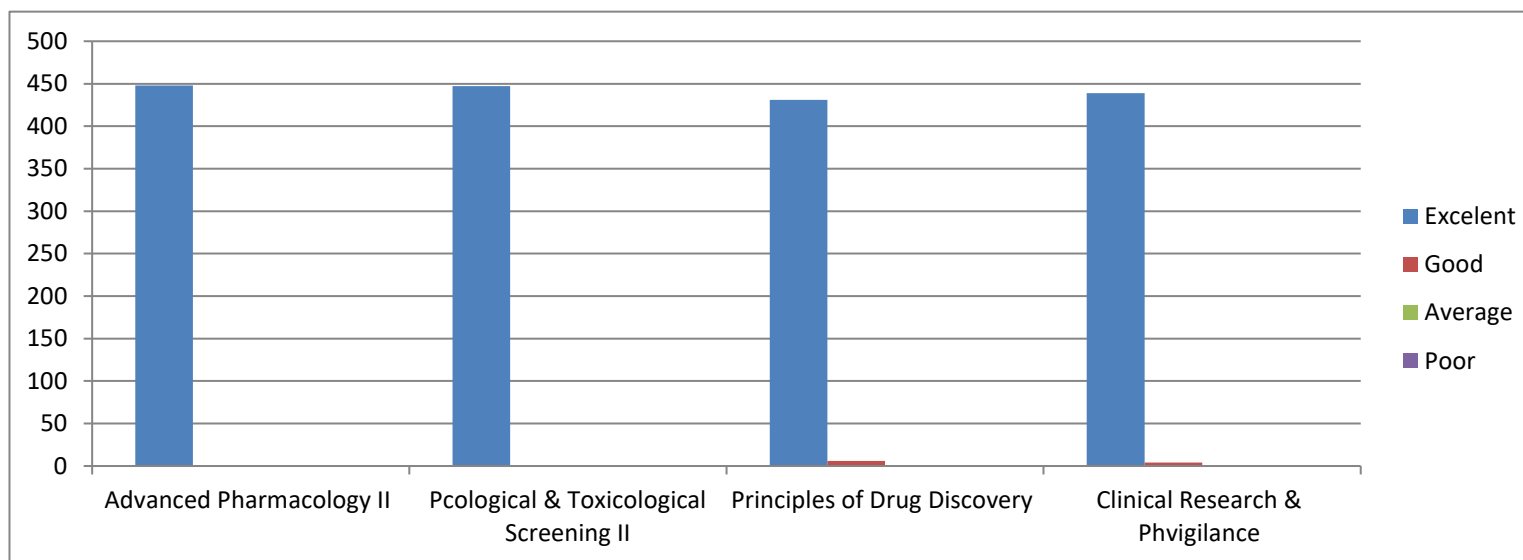


P. H. H. H. H. H.
Principal
 College of Pharmacy, Chincholi
 Tal. Sarnar, Dist. Nashik 422102

Teaching Learning: M. Pharm II sem (Responses 9)

Course: Pharmacology

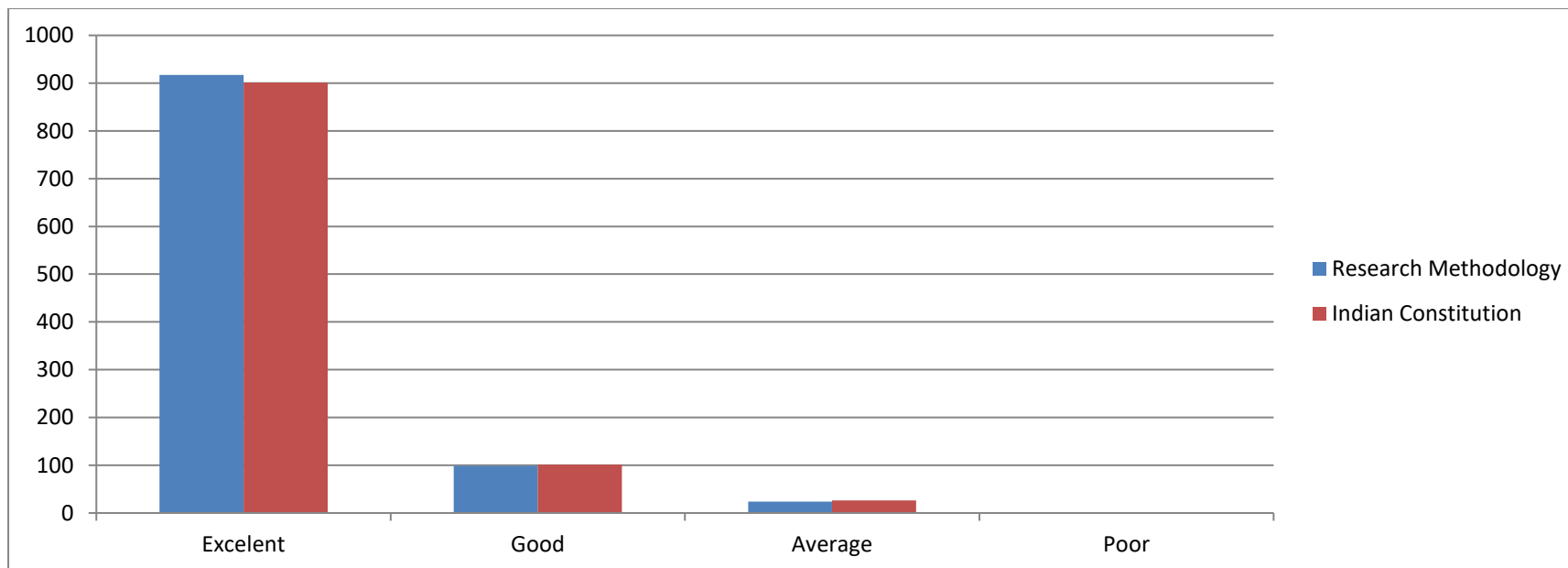
	Advanced Pharmacology II	Pcological & Toxicological Screening II	Principles of Drug Discovery	Clinical Research & Phvigilance
Excelent	448	447	431	439
Good	0	0	6	4
Average	0	0	0	0
Poor	0	0	0	0



P. Bhargale
Principal
College of Pharmacy, Chincholi
Tal. Simar, Dist. Nashik 422102

Teaching Learning: M. Pharm III sem (Responses 22)

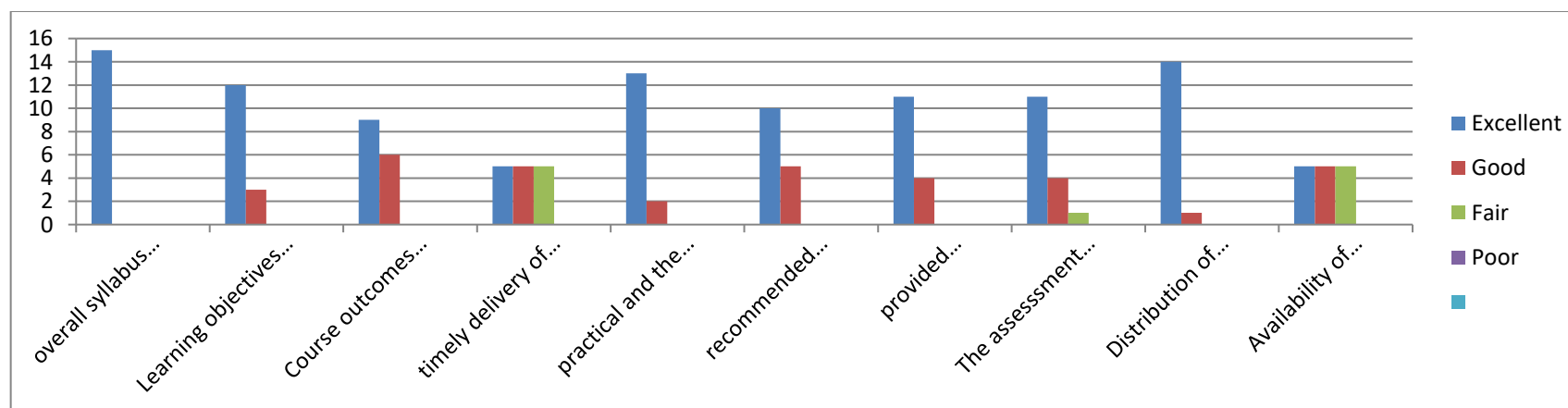
	Research Methodology	Indian Constitution
Excelent	917	901
Good	99	101
Average	24	26
Poor	0	0




P. Bhargale
Principal
College of Pharmacy, Chincholi
Tal. Sinnar, Dist. Nashik 422102

TEACHER FEEDBACK about Facilities (no. of Responses:15)

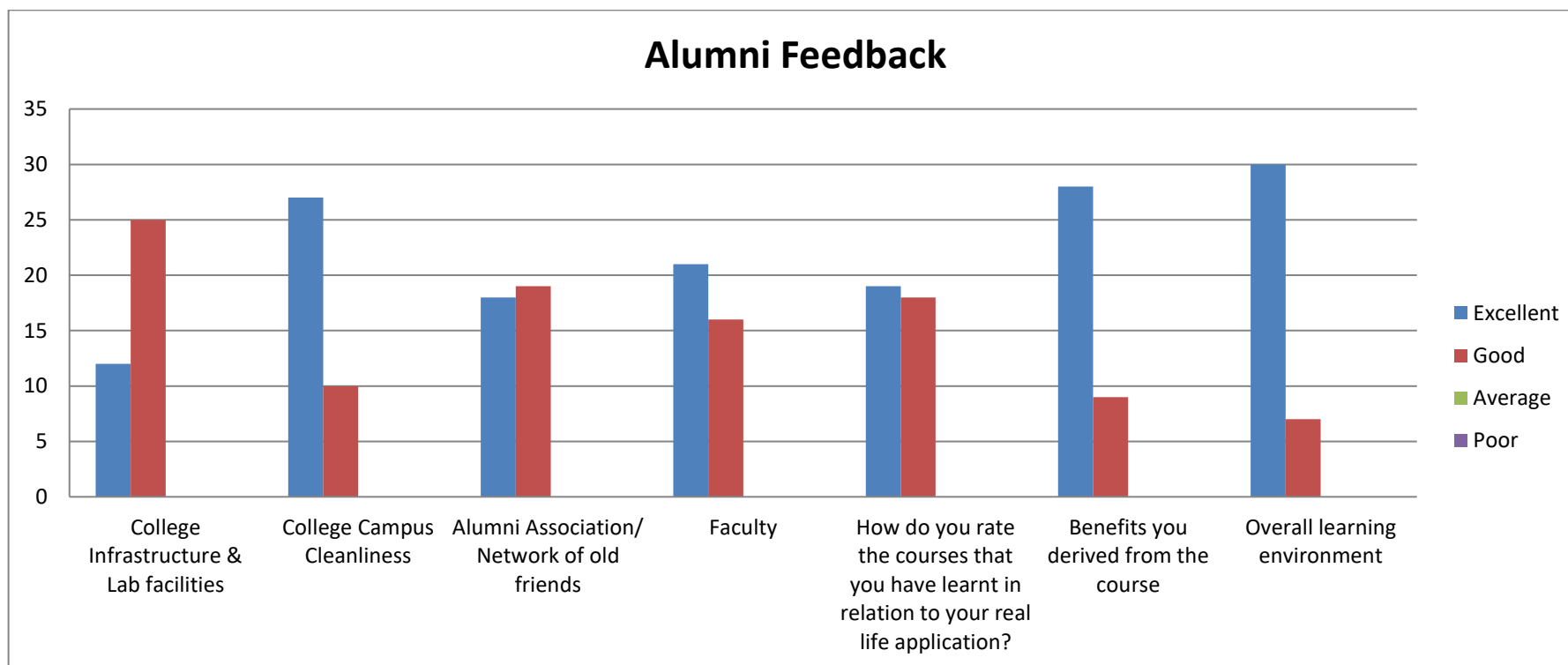
	overall syllabus structure	Learning objectives are addressed effectively in the syllabus	Course outcomes are clear and appropriate to the needs of the students	timely delivery of syllabus is possible in the mentioned number of hours	practical and the theory relativity	recommended books in the syllabus	provided assessments	The assessment criteria accurately measures student learning's	Distribution of courses evenly in the odd and even semesters	Availability of sufficient books
Excellent	15	12	9	5	13	10	11	11	14	5
Good	0	3	6	5	2	5	4	4	1	5
Fair	0	0	0	5	0	0	0	1	0	5
Poor	0	0	0	0	0	0	0	0	0	0

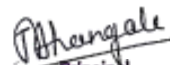



Principal
 College of Pharmacy, Chincholi
 Tal. Sinhar, Dist. Nashik 422102

ALUMNI FEEDBACK about Facilities (no. of Responses:37)

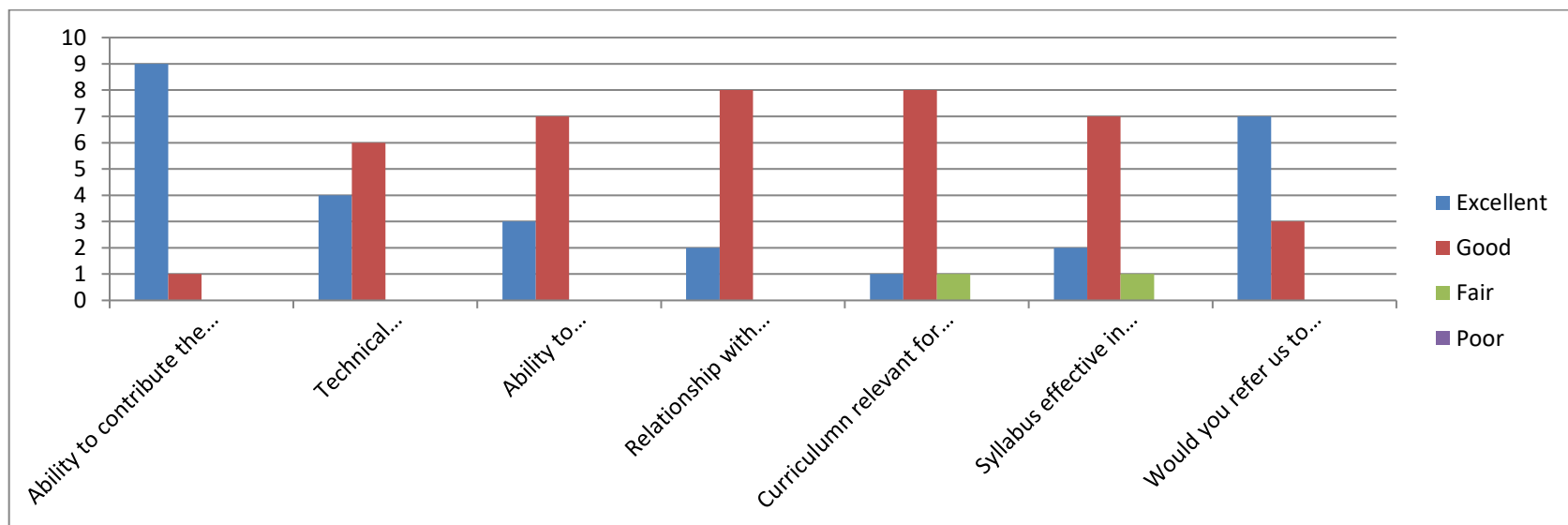
	College Infrastructure & Lab facilities	College Campus Cleanliness	Alumni Association/ Network of old friends	Faculty	How do you rate the courses that you have learnt in relation to your real life application?	Benefits you derived from the course	Overall learning environment
Excellent	12	27	18	21	19	28	30
Good	25	10	19	16	18	9	7
Average	0	0	0	0	0	0	0
Poor	0	0	0	0	0	0	0





 Principal
 College of Pharmacy, Chincholi
 Tel. Sinner, Dist. Nashik 422102

EMPLOYER FEEDBACK about Curriculumn (no. of Responses:10)

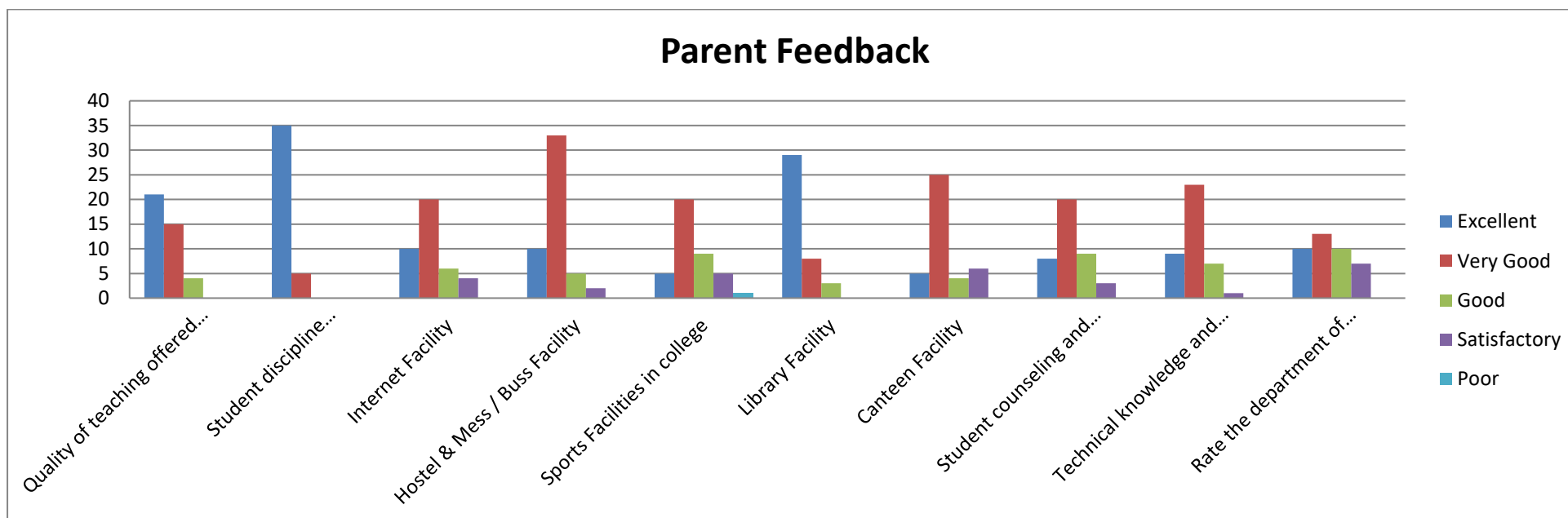
	Ability to contribute the goal of the organization	Technical knowledge/Professional Skills	Ability to manage/leadership & Innovativeness	Relationship with seniors/peers/subordinates	Curriculum relevant for employability	Syllabus effective in developing skill oriented human resources	Would you refer us to other organization
Excellent	9	4	3	2	1	2	7
Good	1	6	7	8	8	7	3
Fair	0	0	0	0	1	1	0
Poor	0	0	0	0	0	0	0





Principal
 College of Pharmacy, Chincholi
 Tal. Sinar, Dist. Nashik 422102

PARENTS FEEDBACK about Facilities (no. of Responses:40)

	Quality of teaching offered by the college	Student discipline maintained by the college	Internet Facility	Hostel & Mess / Buss Facility	Sports Facilities in college	Library Facility	Canteen Facility	Student counseling and Guidance facility	Technical knowledge and communication skills	Rate the department of your ward
Excellent	21	35	10	10	5	29	5	8	9	10
Very Good	15	5	20	3	20	8	25	20	23	13
Good	4	0	6	5	9	3	4	9	7	10
Satisfactory	0	0	4	2	5	0	6	3	1	7
Poor	0	0	0	0	1	0	0	0	0	0




 Principal
 College of Pharmacy, Chincholi
 Tal. Sinar, Dist. Nashik 422102

ACTION TAKEN REPORT (2022-23) ODD SEM

CURRICULUM RELATED FEEDBACK

Sr. No	Suggestions	Action Taken
1	Latest editions of books are not available in library.	The library committee discussed to purchase various new text and reference books as suggested by faculty and students.
2	Include more advance instruments for practical work and all are in working condition	Institute is always planned to purchase new instruments and equipments for student's project and practical work.
3	Syllabus should be as per the industry criteria.	New syllabus will fill the gap between industry and current curriculum.
4	Give the format of practice school report format for VIIth sem	Format for practice school report was given to students for Reference
5	Implementation of Internship program like hospital pharmacist training, pharmacy store working, clinical pharmacist etc.	As per syllabus adopted in final year course Practice school subject is introduced, at where students can learn at hospitals, clinical centers, industries and pharmacy stores. At last report submission on base of internship outcome is there.



P. Hengale
Principal
College of Pharmacy, Chincholi
Tal. Srinagar, Dist. Nashik 422102

ACTION TAKEN REPORT (2022-23) EVEN SEM

CURRICULUM RELATED FEEDBACK

Sr. No	Suggestions	Action Taken
1	Topics related to cosmetics and diet are suggested to include in course	New curriculum includes cosmetics and Diet related subject is added to syllabus.
2	Seminars, webinars and expert lectures for competitive field is suggested	Expert lectures were arranged to improve the knowledge for better performance in competitive fields.
3	Arrange the sessions on opportunities in pharma field	Session on opportunities in pharma field was arranged by Mr. Kunde sir for students.
4	Arrange campus drive for Final Y.B.Pharm and M.Pharm students.	Campus drive was arranged by T&P cell head Mr. Kunde for student's placement.



P. Hengale
Principal
College of Pharmacy, Chincholi
Tal. Sirnar, Dist. Nashik 422102

ACTION TAKEN REPORT

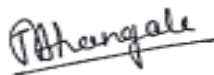
D) CURRICULUM RELATED FEEDBACK STUDENT

Sr. No	Suggestions	Action Taken
1	Latest editions of books are not available in library.	The library committee discussed to purchase various new text and reference books as suggested by faculty and students.
2	Seminars, webinars and expert lectures for competitive field is suggested	Expert lectures was arranged to improve the knowledge for better performance in competitive fields.
3	Arrange weekly student seminar session is suggested.	Concern subject teacher weekly arranged seminar session for student and through that improved student communication skill and also build their confidence etc.
4	Syllabus should be as per the industry criteria.	New syllabus will fill the gap between industry and current curriculum.
5	Give the format of practice school report format for VIIth sem	Format for practice school report was given to students for Reference

TEACHERS FEEDBACK (Curriculum)

Sr. No	Suggestions	Action Taken
1	Latest addition of reference books should be included to library facility.	E-content with E-library was provided for easy any time access of latest edition of books and study material. Every year latest books are purchase as per suggestion of teaching staff member.
2	Need to improve presentation and writing skills of students.	Revise syllabus has courses which focus on communication skills and some value-added courses have been started for students which focus on writing and presentation skills of students.
3	Encourage students to study interdisciplinary courses	New curriculum includes various open elective courses in different subject areas which motivate them to do interdisciplinary learning.
4	Industry-institute interaction should be improved	Institute facilitates students for industrial visit, internship, Minor research project to industry, MoU signed with well-known pharma industries for better interaction to industries.
5	Arrange visit for faculty to analytical instrumental lab and give training on updated instruments.	Vidisha analytical lab visit for faculty was arranged and give training regarding updated instruments. by this way update the knowledge of faculty also.




Principal
 College of Pharmacy, Chincholi
 Tal. Sinar, Dist. Nashik 422102

ALUMNI FEEDBACK (Curriculum)

Sr. No	Suggestions	Action Taken
1	Arrange industrial visit for students for overcoming the gap between the course and their real-life application	Industrial visit was arranged.
2	Facilitate campus recruitment more and strengthen the placement cell	Through T&P cell campus drive was arranged for Final Y.B.Pharm &M.Pharm students
3	Introduce training program to improve the employability skills of students.	Training Session on "Career and employability skill enhancement programme" conducting in association with Rubicon Training, Pune
4	Add skill enhancement courses in curriculum	For Final Y.B.Pharm students skill enhancement courses was added.

EMPLOYER FEEDBACK

Sr. No	Suggestions	Action Taken
1	Students need to be aware of recent trends and advancement of topics implemented in industry.	Various expert talks of industry personnel have been arranged throughout the year to make them aware about recent advanced practices adopted by industries.
2	Curriculum must be map with employability	Skill enhancement compulsory courses was introduced in curriculum to improve employability.

PARENT FEEDBACK

Sr. No	Suggestions	Action Taken
1	To conduct class test before CIA examination	Concern staff member was conducted class test in the form of short or long answers and revise the portion of syllabus before CIA examination.
2	Latest books to be included	Department Updating the curriculum the latest books and journals have been included to benefit the students.



P. Hargale
Principal
College of Pharmacy, Chincholi
Tal. Sinnar, Dist. Nashik 422102

FACILITY RELATED FEEDBACK

STUDENT

Sr. No	Suggestions	Action Taken
1	Hygiene in the Hostel amenities & improvement in the quality of food is appreciated	Steps are taken to improve the hygiene in hostel and the student committee for mess will review the meals.
3	Needs faculty assistance to utilize the available resources	Faculty are instructed to explain the available resources in the campus and the protocol for using them.
4	Improvement in interaction between teacher & students is needed	Mentor-mentee interaction weakly was arranged.
5	Wash rooms and rest rooms are very old for better hygiene renovation is suggested.	Washrooms and rest rooms renovation was done.

TEACHERS

Sr. No	Suggestions	Action Taken
1	Research related journals and required books should be added	Latest books and journals were added in library-by-library committee member.
2	Toilet must be clean and safe to use with proper water and sanitation facilities.	Appointing separate sweeper for cleaning the toilet.
3	Internet connection is not sufficient so provide Wi-Fi facility at various places	Wi-Fi modem installed at various position in the college

ALUMNI

Sr. No	Suggestions	Action Taken
1	Provide more opportunities and training for sports and game	Sports week was arranged in college and also through NSS the students participated in inter-colleges sport competition.
2	Students should be encouraged to participate and presented papers in seminars and conferences.	Teachers of institutes will guide students to attend workshops, training program, seminars and help them to present research and review papers in this kind of events.
3	Strengthen industry training, career counseling and placement activities.	Our placement cell has organized various webinars related to career counseling after under graduation and also planned to organize sessions on which focus on placements of students.



P. Bhargale
Principal
College of Pharmacy, Chincholi
Tal. Sinar, Dist. Nashik 422102

EMPLOYER

Sr. No	Suggestions	Action Taken
1	Students should have knowledge of IPR	Various talks and seminars focus on IPR and patents have been organized.
2	Institute needs to be implemented industry required experimental knowledge	New curriculum is more oriented towards industry topics.

PARENTS

Sr. No	Suggestions	Action Taken
1	Parents requested to give special attention to slow learners.	Identified the slow learners and spot their areas of difficulties/challenges. Prepared modules accordingly and adopt appropriate methods/activities to impart the academic contents.
2	There was a suggestion on students' engagement in non-academic matters	The college decided to conduct non-academic programs also through online. It helped students to involve in various activities, in addition to academics
3	Regular cleaning of toilets, common room, classrooms, labs and college campus.	On regular basis the cleaning done by peon. For that extra peon are appointed in college.
4	Provide the requirement box, apron, cap, safety google etc. in college.	Requirement box, Apron, safety goggle etc. was provided with specific charges.



P. Hengale
Principal
College of Pharmacy, Chincholi
Tal. Simar, Dist. Nashik 422102